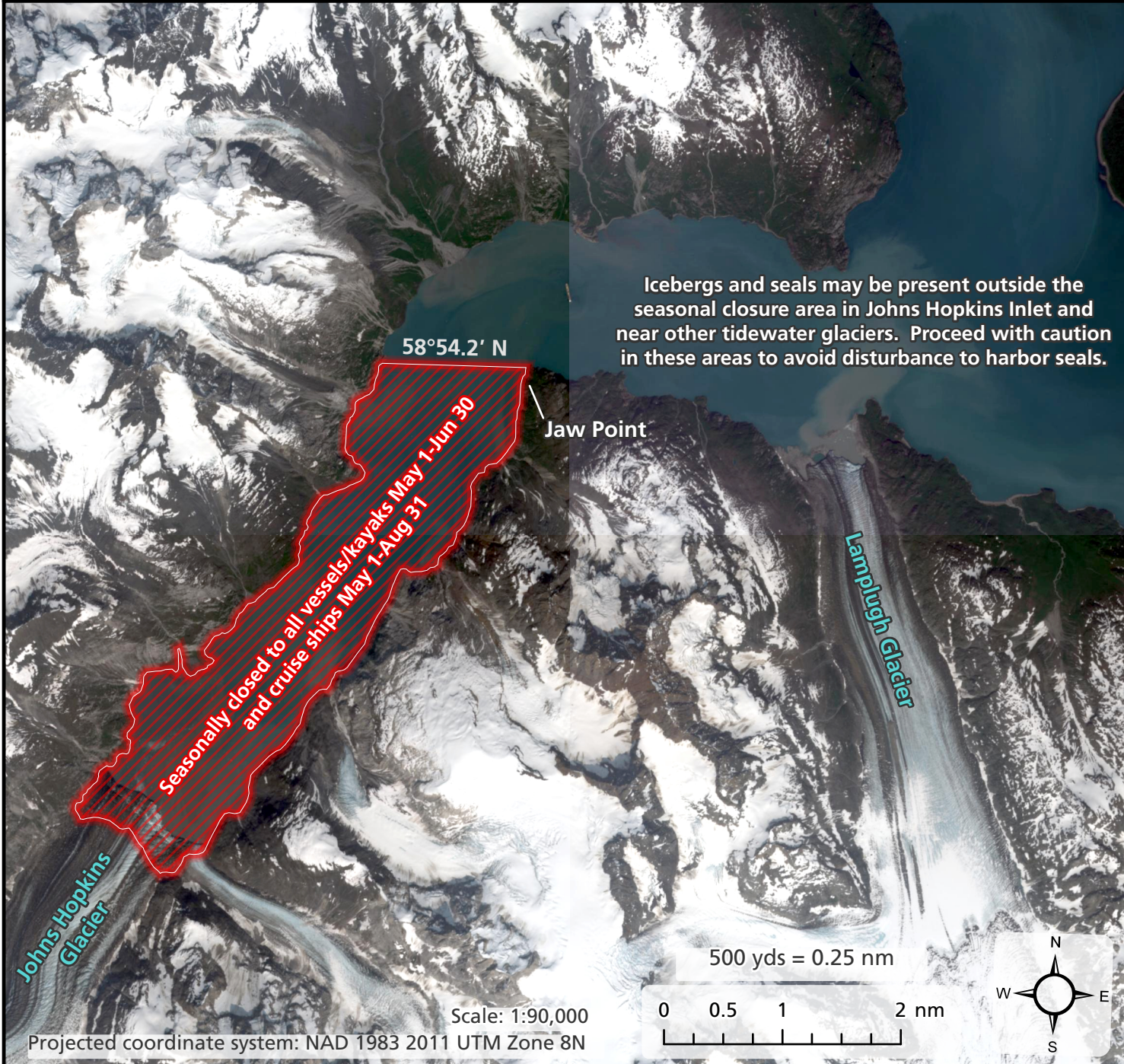


Johns Hopkins Inlet: Important habitat for harbor seals for pupping, molting, and resting.

Glacier Bay National Park & Preserve
National Park Service
U.S. Department of the Interior



Icebergs and seals may be present outside the seasonal closure area in Johns Hopkins Inlet and near other tidewater glaciers. Proceed with caution in these areas to avoid disturbance to harbor seals.

APPROACH GUIDELINES FOR ALL GLACIAL AREAS

- 1) All vessels should maintain 500 yds/0.25 nm from seals without compromising safe navigation. Approach and depart fjords with a plan to avoid surprising seals.
- 2) Minimize wake, avoid abrupt changes in course or engine pitch, and avoid loud noises in the vicinity of seals. Consider avoiding use of the audio sound systems on outer decks.
- 3) If possible, avoid travel through thick ice which provides habitat for birthing and nursing of pups. The absence of seals on the ice doesn't mean the area isn't being used.
- 4) Minimize overlap with the peak numbers of seals hauled out midday. Research demonstrates that higher numbers of seals are hauled around mid-day and during the afternoon.

(Adapted from Approach Guidelines in Glacier Fjords by NOAA Fisheries)

